

Robtex

220LC-9S

Long Reach Excavator

MOVING YOU FURTHER

Working ranges

Engine	Cummins B5.9-C
Operating weight	24,360 kg (53,700 lb)
Bucket capacity (SAE)	0.51 m ³ (0.67 yd ³)
Max. reach on ground level	15,120 mm (49' 7")
Digging depth	11,760 mm (38' 7")
Travel speed	3.4 to 5.9 km/hr (2.1 to 3.7 mph)

Boom length	8,200 mm (26' 11")
Arm length	6,300 mm (20' 8")
A Max. digging reach	15,220 mm (50' 0")
A' Max. digging reach on ground	15,120 mm (49' 7")
B Max. digging depth	11,760 mm (38' 7")
B' BMax. digging depth (8' level)	11,650 mm (38' 3")
C Max. vertical wall digging depth	9,610 mm (31' 6")
D Max. digging height	12,550 mm (41' 2")
E Max. dumping height	10,280 mm (33' 9")
F Min. swing radius	4,870 mm (16' 0")

Long Reach Front Includes:

Boom, Arm, Linkage, Bucket, Cylinders (boom, arm, and bucket), Hydraulic lines, and Additional counterweight for stability.

Designed especially for river maintenance and settling pond rehabilitation in plants.

The extended range front attachments give all the advantages of a hydraulic excavator plus an exceptional long reach range.

Relief Valve Setting

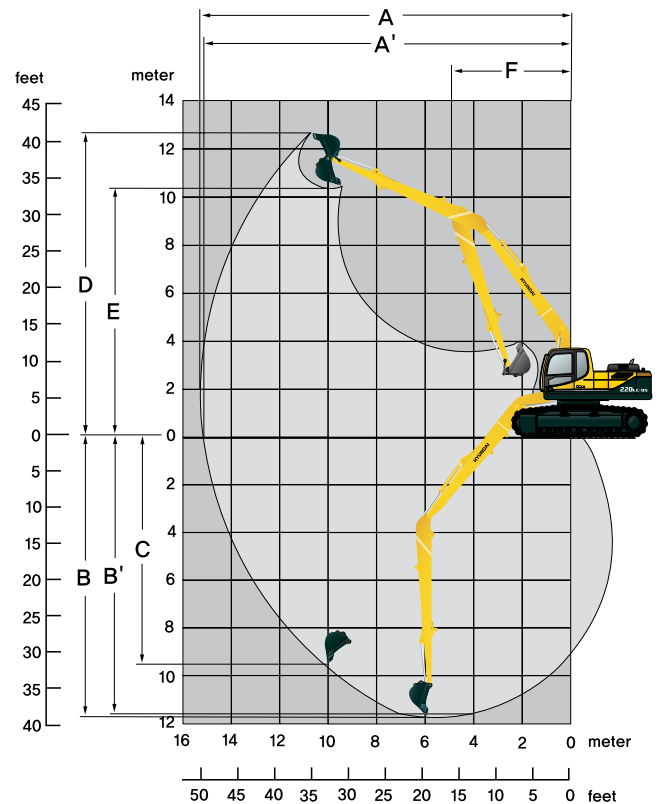
Implement circuits	350 kgf/cm ²
Travel	350 kgf/cm ²
Power boost (boom, arm, bucket)	380 kgf/cm ²
Swing circuit	265 kgf/cm ²
Pilot circuit	40 kgf/cm ²
Travel speed	Installed

Hydraulic cylinders

No. of cylinder bore X stroke	Boom: 2 - 120 X 1,290 mm
	Arm: 1 - 140 X 1,510 mm
	Bucket: 1 - 120 X 1,055 mm

Digging force

Bucket digging force	(SAE) 7,400 kgf [72.6 kN] (16,310 lbf)
	(ISO) 8,500 kgf [83.4 kN] (18,740 lbf)
Arm crowd force	(SAE) 5,000 kgf [49.0 kN] (11,020 lbf)
	(ISO) 5,100 kgf [50.0 kN] (11,240 lbf)



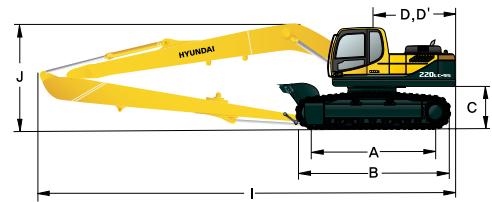
Operating weight (approximate)

Operating weight, including 8,200mm (26' 11") Boom, 6,300mm (20' 8") Arm, SAE heaped 0.51m³ (0.67yd³) backhoe bucket, and 800 mm (32") triple grouser shoe, additional counterweight lubricant, coolant, and full fuel tank, Hyd. tank and the standard equipment.

Upperstructure weight	9,400 kg (20,720 lb)
Counterweight	5,300 kg (11,680 lb)
Attachment	4,600 kg (10,140 lb)
Operating weight	24,360 kg (53,700 lb)
Drawbar pull	21,100 kgf (46,500 lb)
Ground pressure	0.42 kgf/cm ² (5.97 psi)

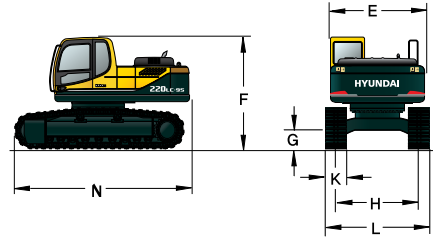
Shipping dimensions

A Tumbler distance	3,650 mm (12' 0")
B Overall length of crawler	4,440 mm (14' 7")
C Ground clearance of counterweight	1,060 mm (3' 6")
D Tail swing radius	2,830 mm (9' 3")
D' Rear-end length	2,770 mm (9' 1")
I Overall length	12,030 mm (39' 6")
J Overall height of boom	3,280 mm (10' 9")



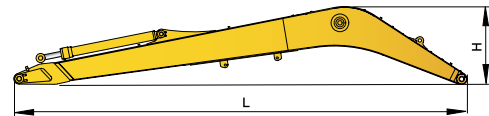
Base machine

E Overall width of upperstructure	2,740 mm (9' 0")
F Overall height of cab	2,920 mm (9' 7")
G Min. ground clearance	480 mm (1' 7")
H Track gauge	2,390 mm (7' 10")
K Track shoe width	800 mm (32")
L Overall width	3,190 mm (10' 6")
N Overall length	4,990 mm (16' 4")
Weight	18,380 kg (40,520 lb)



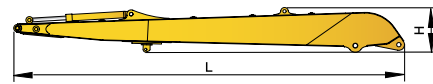
Long reach boom

L Overall length	8,395 mm (27' 7")
H Overall height	1,515 mm (5' 0")
W Overall width	800 mm (2' 7")
Weight	2,470 kg (5,450 lb)



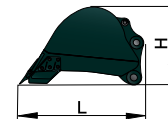
Long reach arm

L Overall length	7,280 mm (23' 11")
H Overall height	835 mm (2' 9")
W Overall width	480 mm (1' 7")
Weight	1,340 kg (2,950 lb)



Bucket

L Overall length	1,600 mm (5' 3")
H Overall height	980 mm (3' 3")
W Overall width	820 mm (2' 8")
Weight	465 kg (1,030 lb)



Rating over-front Rating over-side or 360 degree

R220LC-9S LIFTING CAPACITY

Boom: 8.2 m (26' 11") / Arm: 6.3 m (20' 8") / Bucket: 0.52 m³ (0.68 yd³) SAE heaped / Shoe: 800 mm (32") triple grouser

Load point height m (ft)		Load radius								At max. reach		
		3.0 m (10 ft)		6.0 m (20 ft)		9.0m (30ft)		12.0m (40ft)		Capacity		Reach m (ft)
9.0 m (30 ft)	kg							*830	*830	*1330	*1330	13.11 (43.0)
	lb							*1830	*1830	*2930	*2930	
6.0 m (20 ft)	kg							*1430	*1430	*1410	1160	14.37 (47.1)
	lb							*3150	*3150	*3110	2560	
3.0 m (10 ft)	kg					*1990	*1990	*1670	1630	*1520	980	14.89 (48.9)
	lb					*4390	*4390	*3680	3590	*3350	2160	
Ground Line	kg	*4560	*4560	*4330	*4330	*2650	2430	*1980	1440	*1670	930	14.75 (48.4)
	lb	*10050	*10050	*9550	*9550	*5840	5360	*4370	3170	*3680	2050	
-3.0 m (-10 ft)	kg	*5710	*5710	*5250	3920	*3150	2140	*2220	1310	*1860	1020	13.92 (45.7)
	lb	*12590	*12590	*11570	8640	*6940	4720	*4890	2890	*4100	2250	
-6.0 m (-20 ft)	kg	*7790	*7790	*5370	3840	*3280	2060			*2090	1330	12.25 (40.2)
	lb	*17170	*17170	*11840	8470	*7230	4540			*4610	2930	
-9.0 m (-30 ft)	kg	*8780	*8780	*4510	4110	*2620	2260					
	lb	*19360	*19360	*9940	9060	*5780	4980					

1. Lifting capacity are based on SAE J1097 and ISO 10567.

2. Lifting capacity of the ROBEX series does not exceed 75% of tipping load with the machine on firm, level ground or 87% of full hydraulic capacity.

3. The load point is a hook located on the back of the bucket.

4. (*) indicates load limited by hydraulic capacity.